

# FOULADYAR KOUROSH GROUP



- **In 2003, Parto Sanat Jonoob** Trading Company was established under registration number 211346, relying on a team of young educated professionals and experienced managers. The company began its operations in the supply and distribution of various types of cold-rolled, galvanized, and pre-painted steel sheets. Over the years, it has built a solid reputation in this field by sourcing materials from domestic and international manufacturers, as well as through the Metal Exchange Market.
- **In 2007, Ava Tejarat Zarrin** Trading Company was founded under registration number 309616, managed by one of the industry's well-known and experienced executives. This company also focused on supplying and distributing cold-rolled, galvanized, and pre-painted steel sheets, playing a significant role in meeting market demands through its strong capabilities and professional management.
- **In 2016**, in response to the market's growing need for steel products made from cold-rolled, galvanized, and pre-painted sheets, Kourosh Steel Group was established as a manufacturing and industrial company. Built on a 30,000 m<sup>2</sup> land area with a 21,000 m<sup>2</sup> production hall, and equipped with 20 advanced slitting, cutting, and forming machines, the company was registered under number 495418 and obtained an operating license No. 78572 from the Ministry of Industry, Mine, and Trade. Its annual production capacity reaches 120,000 tons of fabricated steel products and 47,000 tons of longitudinal and transverse cuts.

**In 2024, Kourosh Steel Group's** steel profile production lines, equipped with Italian technology, were inaugurated with the capability to manufacture 202 types of steel profiles in thicknesses ranging from 0.8 mm to 8 mm, with an annual capacity of 260,000 tons.

Today, the Kourosh Steel Group proudly provides employment for over 200 skilled specialists, playing a key role in the production and supply of metal and construction products in the market.



## FOULADYAR KOUROSH GROUP CONSTRUCTION COMPANY

- In 2021, **Kourosh Steel Construction Company** was established by the Kourosh Steel Group to enhance and develop the quality of the construction industry through modern engineering methods.

With the collaboration of skilled and creative professionals, the company was officially registered under number 587646, aiming to contribute to the creation of modern and distinguished architectural structures by leveraging the valuable experience of the group's experts.

At present, Kourosh Steel Construction Company employs 20 specialized professionals, actively engaged in advancing innovation and excellence in the construction sector.

### Ongoing Projects ▼

📍 Elahieh



📍 Niavaran







Steel Profile Production Line

## CATALOG CONTENTS



**1-15**



### **Steel Profiles**

Advantages of Kourosh Steel Group's Production Lines and Steel Profiles

Steel Profile Specification Table

Steel Profile Production Line – Kourosh Steel Factory

**16-17**



### **Types of Steel Sheets**

Hot-Rolled – Cold-Rolled – Galvanized – Pre-Painted Steel Sheets



## 18-33 | **Types of Formings**

Steel Decking Forming

Tile Profile Forming: Swedish Tile – Italian Tile – French Tile

Trapezoidal Forming

Dampa (Lambe) Forming

Fine Corrugated Forming – Sinusoidal Corrugated Forming (Various Patterns)

Shadoline Forming (Traditional and New Designs)

Forming and Cutting Production Line – Kourosh Steel Factory

## 34-35 | **Longitudinal and Transverse Cutting of Steel Sheets**



**Forming & Cutting Production Line**

# STEEL PROFILE

## Square & Rectangular Tube

**Kourosh Steel Group**, operating in a 10,000 m<sup>2</sup> production hall, utilizes the latest Italian technology to manufacture 202 types of steel profiles with an annual production capacity of 260,000 tons. The production range includes hot-rolled, cold-rolled, and galvanized steel sheets, covering profile dimensions from 20×20 mm to 130×200 mm and thicknesses from 0.8 mm to 8 mm.

What distinguishes Kourosh Steel Group's production lines from other profile manufacturers in Iran is the use of the direct forming method.

In this process, hot-rolled (black), cold-rolled (oiled), and galvanized sheets are directly formed into square or rectangular profiles without first being converted into pipes.

This advanced method results in lighter products (approximately 2–5% less weight) compared to similar-sized profiles produced by conventional methods, while maintaining superior strength and precision.



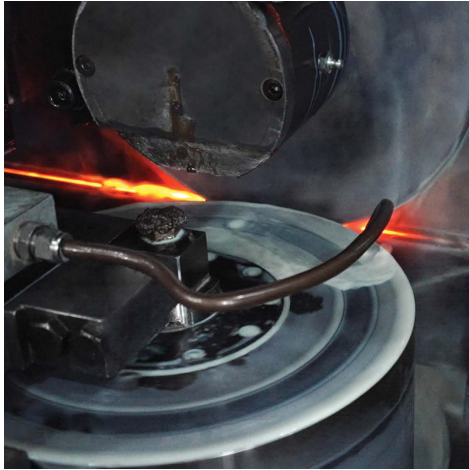
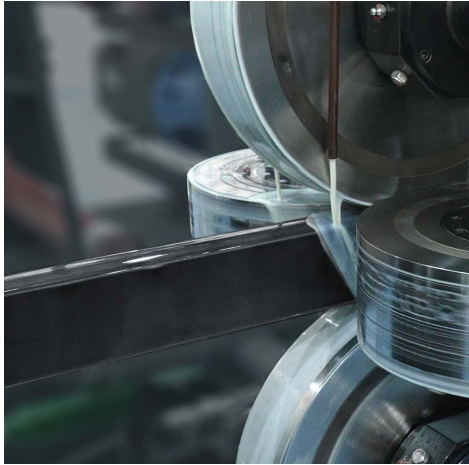
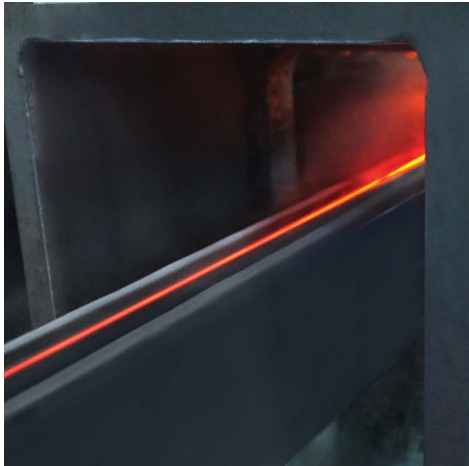






# ADVANTAGES OF Fouladyar Steel Profile





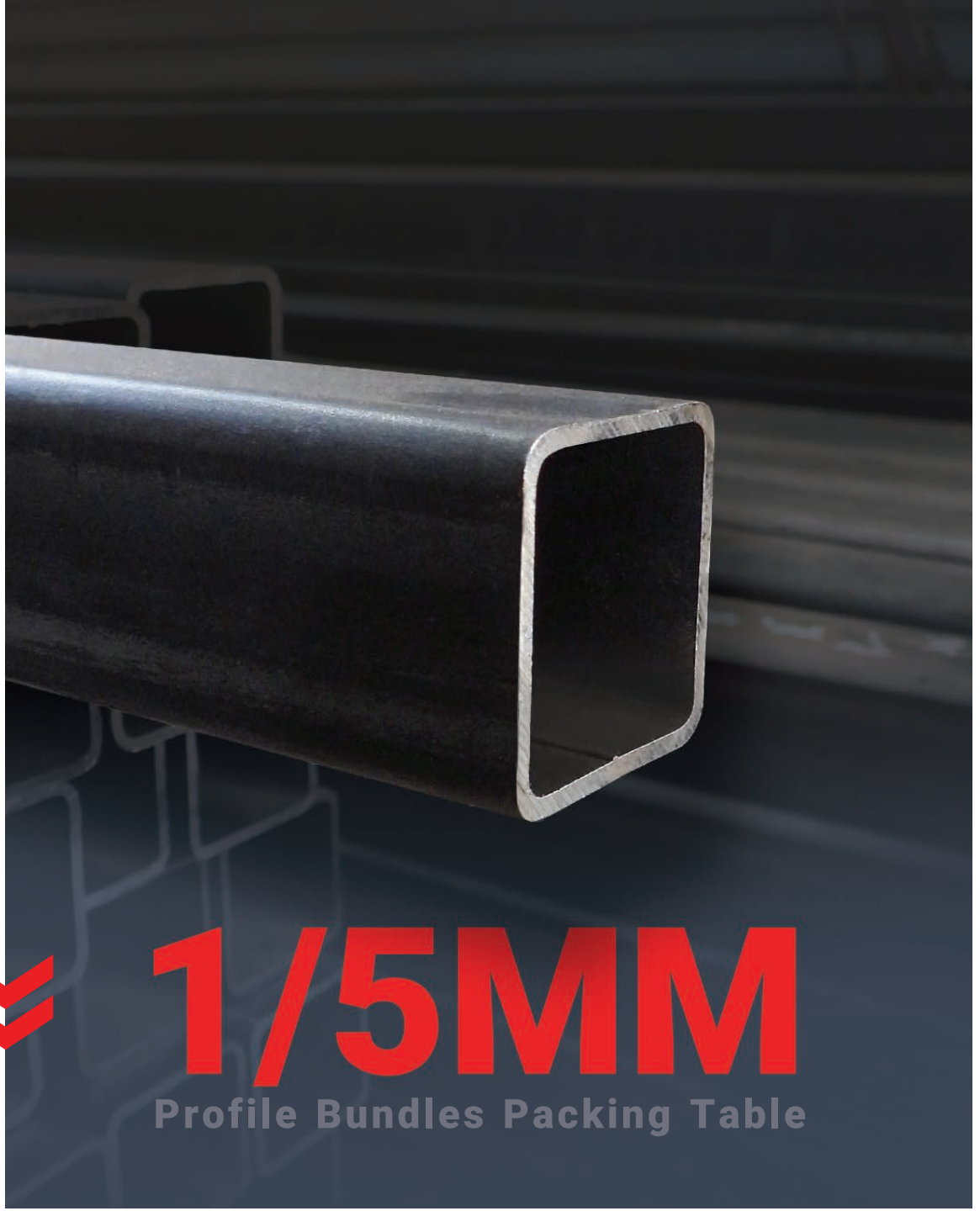
## ADVANTAGES OF FOULADYAR KOUROSH GROUP

- Steel Profiles and Production Lines
- Ability to produce custom-made profiles with desired thickness, dimensions, and corner radii
- Lighter weight without reducing size or thickness, while maintaining high strength
- Uniform high-frequency welded seams with excellent durability
- Cost-effective due to reduced weight
- High-speed production lines with large-scale manufacturing capacity



# 1/5MM

Profile Bundles Packing Table





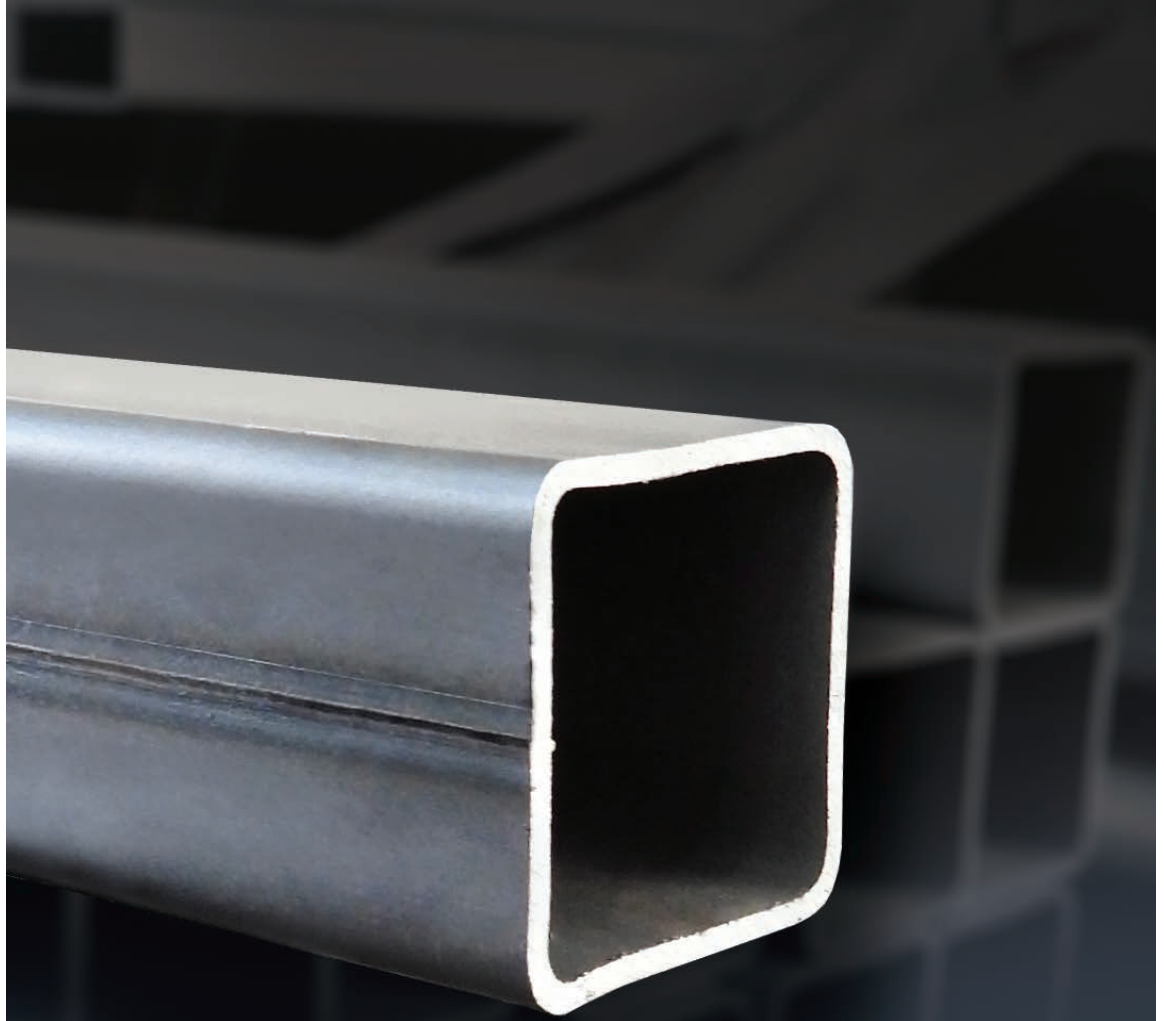
## Steel Profile Bundle Specifications – 1.5 mm Thickness

Profile Section (mm)	Thickness (mm)	Width (mm)	Height (mm)	Length (mm)	Weight (kg)	Bundle Arrangement	Profile Per Bundle	Bundle Gross Weight (kg)	Bundle Size (mm)
20x20x1/5 mm	1/5	20	20	6000	5.09	14x14	196	1/003	280x280
25x25x1/5 mm	1/5	25	25	6000	6.5	13x13	169	1/104	325x325
30x20x1/5 mm	1/5	20	30	6000	6.5	11x15	165	1/078	330x300
30x30x1/5 mm	1/5	30	30	6000	7.91	11x10	110	875	330x300
35x35x1/5 mm	1/5	35	35	6000	9.33	11x10	110	1/031	385x350
40x20x1/5 mm	1/5	20	40	6000	7.91	8x15	120	954	320x300
40x25x1/5 mm	1/5	25	40	6000	8.62	8x15	120	1/039	320x375
40x30x1/5 mm	1/5	30	40	6000	9.33	9x12	108	1/013	360x360
40x40x1/5 mm	1/5	40	40	6000	10.74	10x10	100	1/079	400x400
50x20x1/5 mm	1/5	20	50	6000	9.33	7x16	112	1/050	350x320
50x30x1/5 mm	1/5	30	50	6000	10.74	7x12	84	907	350x360
50x40x1/5 mm	1/5	40	50	6000	12.15	10x10	100	1/220	500x400
50x50x1/5 mm	1/5	50	50	6000	13.56	9x9	81	1/103	450x450
60x20x1/5 mm	1/5	20	60	6000	10.74	6x16	96	1/036	360x320
60x30x1/5 mm	1/5	30	60	6000	12.15	7x12	84	1/026	420x360
60x40x1/5 mm	1/5	40	60	6000	13.56	8x9	72	981	480x360
60x50x1/5 mm	1/5	50	60	6000	14.98	7x10	70	1/054	420x500
60x60x1/5 mm	1/5	60	60	6000	16.39	8x8	64	1/054	480x480
70x30x1/5 mm	1/5	30	70	6000	13.56	6x13	78	1/063	420x390
70x70x1/5 mm	1/5	70	70	6000	19.22	7x7	49	947	490x490
80x40x1/5 mm	1/5	40	80	6000	16.39	6x10	60	988	480x400
80x60x1/5 mm	1/5	60	80	6000	19.22	6x8	48	928	480x480
100x40x1/5 mm	1/5	40	100	6000	19.22	5x11	55	1/062	500x440
100x50x1/5 mm	1/5	50	100	6000	20.63	5x10	50	1/037	500x500



# 1/8MM

Profile Bundles Packing Table



## Steel Profile Bundle Specifications – 1.8 mm Thickness

Profile Section (mm)	Thickness (mm)	Width (mm)	Height (mm)	Length (mm)	Weight (kg)	Bundle Arrangement	Profile Per Bundle	Bundle Gross Weight (kg)	Bundle Size (mm)
20x20x1/8 mm	1/8	20	20	6000	5.93	13x13	169	1/007	260x260
25x25x1/8 mm	1/8	25	25	6000	7.63	13x13	169	1/294	325x325
30x20x1/8 mm	1/8	20	30	6000	7.63	10x14	140	1/073	300x280
30x30x1/8 mm	1/8	30	30	6000	9.33	11x10	110	1/031	330x300
35x35x1/8 mm	1/8	35	35	6000	11.02	11x10	110	1/217	385x350
40x20x1/8 mm	1/8	20	40	6000	9.33	8x15	120	1/125	320x300
40x25x1/8 mm	1/8	25	40	6000	10.17	8x13	104	1/063	320x325
40x30x1/8 mm	1/8	30	40	6000	11.02	9x12	108	1/195	360x360
40x40x1/8 mm	1/8	40	40	6000	12.72	10x10	100	1/277	400x400
50x20x1/8 mm	1/8	20	50	6000	11.02	7x14	98	1/085	350x280
50x30x1/8 mm	1/8	30	50	6000	12.72	7x11	77	984	350x330
60x30x1/8 mm	1/8	30	60	6000	14.41	6x12	72	1/043	360x360
60x40x1/8 mm	1/8	40	60	6000	16.11	8x9	72	1/165	480x360
60x60x1/8 mm	1/8	60	60	6000	19.5	8x7	56	1/097	480x420
70x30x1/8 mm	1/8	30	70	6000	16.11	6x11	66	1/068	420x330
70x70x1/8 mm	1/8	70	70	6000	22.89	7x7	49	1/127	490x490
80x40x1/8 mm	1/8	40	80	6000	19.5	5x10	50	980	400x400
80x60x1/8 mm	1/8	60	80	6000	22.89	6x8	48	1/104	480x480
100x40x1/8 mm	1/8	40	100	6000	22.89	4x10	40	921	400x400
100x50x1/8 mm	1/8	50	100	6000	24.59	5x8	40	989	500x400





# 2MM

## Profile Bundles Packing Table



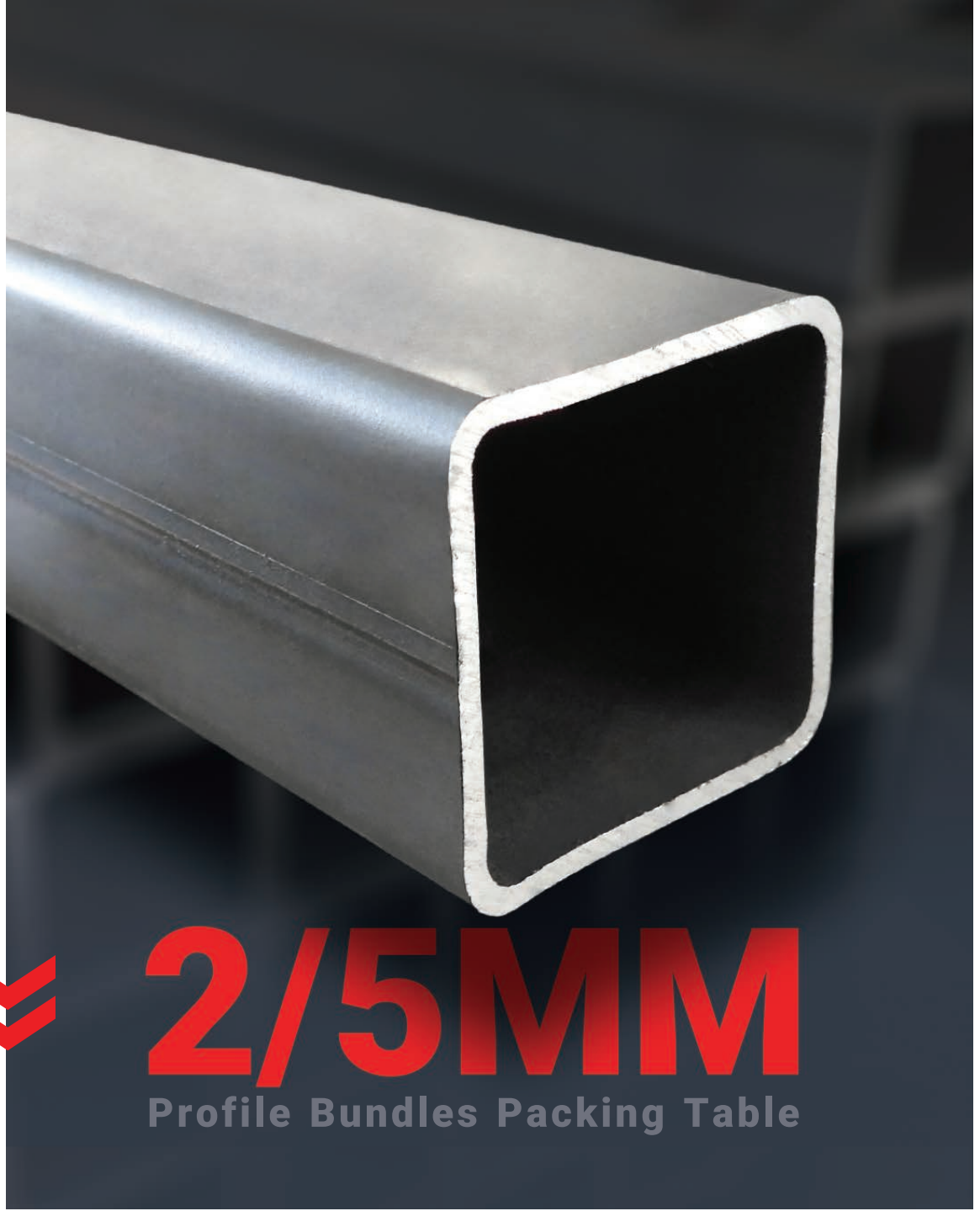
## Steel Profile Bundle Specifications – 2 mm Thickness

Profile Section (mm)	Thickness (mm)	Width (mm)	Height (mm)	Length (mm)	Weight (kg)	Bundle Arrangement	Profile Per Bundle	Bundle Gross Weight (kg)	Bundle Size (mm)
20x20x2 mm	2	20	20	6000	6.5	12x12	144	941	240x240
25x25x2 mm	2	25	25	6000	8.38	11x11	121	1/019	275x275
30x20x2 mm	2	20	30	6000	8.38	9x14	126	1/061	270x280
30x30x2 mm	2	30	30	6000	10.27	10x10	100	1/032	300x300
35x35x2 mm	2	35	35	6000	12.15	10x9	90	1/099	350x315
40x20x2 mm	2	20	40	6000	10.27	8x15	120	1/237	320x300
40x25x2 mm	2	25	40	6000	11.21	8x12	96	1/081	320x300
40x30x2 mm	2	30	40	6000	12.15	9x11	99	1/208	360x330
40x40x2 mm	2	40	40	6000	14.04	9x8	72	1/016	360x320
50x20x2 mm	2	20	50	6000	12.15	7x12	84	1/026	350x240
50x30x2 mm	2	30	50	6000	14.04	7x11	77	1/086	350x330
50x40x2 mm	2	40	50	6000	15.92	8x8	64	1/024	400x320
50x50x2 mm	2	50	50	6000	17.8	8x7	56	1/002	400x350
60x25x2 mm	2	25	60	6000	14.98	6x12	72	1/084	360x300
60x30x2 mm	2	30	60	6000	15.92	6x12	72	1/151	360x360
60x40x2 mm	2	40	60	6000	17.8	6x9	54	966	360x360
60x50x2 mm	2	50	60	6000	19.69	7x8	56	1/108	420x400
60x60x2 mm	2	60	60	6000	21.57	7x7	49	1/062	420x420
70x30x2 mm	2	30	70	6000	17.8	6x10	60	1/073	420x300
70x70x2 mm	2	70	70	6000	25.34	7x6	42	1/069	490x420
75x75x2 mm	2	75	75	6000	27.22	6x6	36	985	450x450
80x40x2 mm	2	40	80	6000	21.57	5x10	50	1/084	400x400
80x60x2 mm	2	60	80	6000	25.34	6x7	42	1/069	480x420
100x40x2 mm	2	40	100	6000	25.34	4x10	40	1/019	400x400
100x50x2 mm	2	50	100	6000	27.22	5x8	40	1/094	500x400



**2/5MM**

Profile Bundles Packing Table





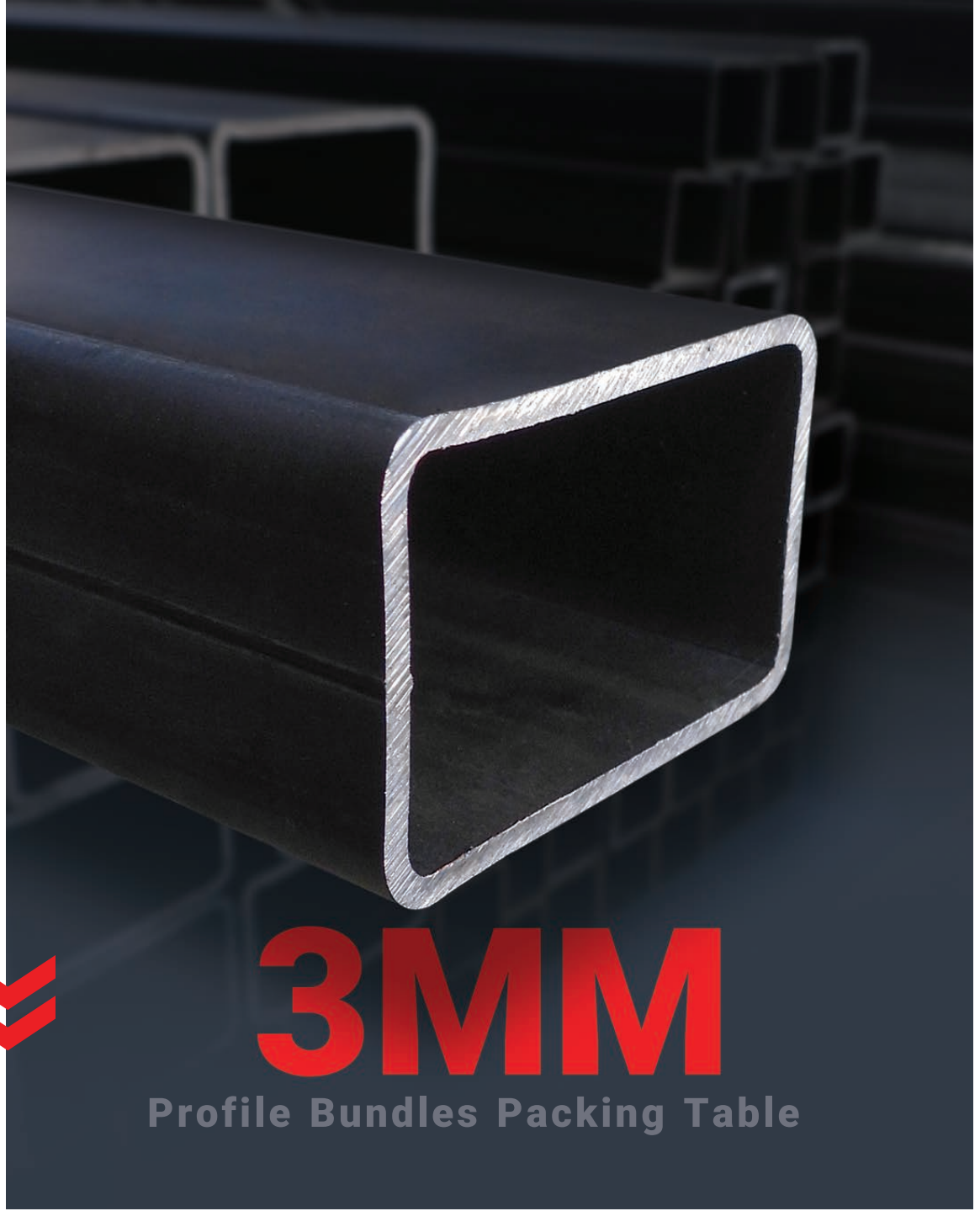
## Steel Profile Bundle Specifications – 2.5 mm Thickness

Profile Section (mm)	Thickness (mm)	Width (mm)	Height (mm)	Length (mm)	Weight (kg)	Bundle Arrangement	Profile Per Bundle	Bundle Gross Weight (kg)	Bundle Size (mm)
35x35x5/2 mm	2/5	35	35	6000	14.84	8x8	64	955	280x280
40x40x5/2 mm	2/5	40	40	6000	17.19	8x8	64	1/105	320x320
50x40x5/2 mm	2/5	40	50	6000	19.55	7x8	56	1/100	350x320
50x50x5/2 mm	2/5	50	50	6000	21.9	7x7	49	1/078	350x350
55x55x5/2 mm	2/5	55	55	6000	24.26	7x7	49	1/194	385x385
60x30x5/2 mm	2/5	30	60	6000	19.55	5x10	50	983	300x300
60x40x5/2 mm	2/5	40	60	6000	21.9	6x8	48	1/056	360x320
60x50x5/2 mm	2/5	50	60	6000	24.26	6x7	42	1/024	360x350
60x60x5/2 mm	2/5	60	60	6000	26.61	6x7	42	1/123	360x420
65x65x5/2 mm	2/5	65	65	6000	28.97	6x6	36	1/048	390x390
70x70x5/2 mm	2/5	70	70	6000	31.32	6x6	36	1/133	420x420
75x75x5/2 mm	2/5	75	75	6000	33.68	6x6	36	1/217	450x450
80x40x5/2 mm	2/5	40	80	6000	26.61	5x8	40	1/069	400x320
80x60x5/2 mm	2/5	60	80	6000	31.32	6x6	36	1/133	480x360
100x40x5/2 mm	2/5	40	100	6000	31.32	4x8	32	1/007	400x320
100x50x5/2 mm	2/5	50	100	6000	33.68	4x8	32	1/083	400x400



# 3MM

## Profile Bundles Packing Table

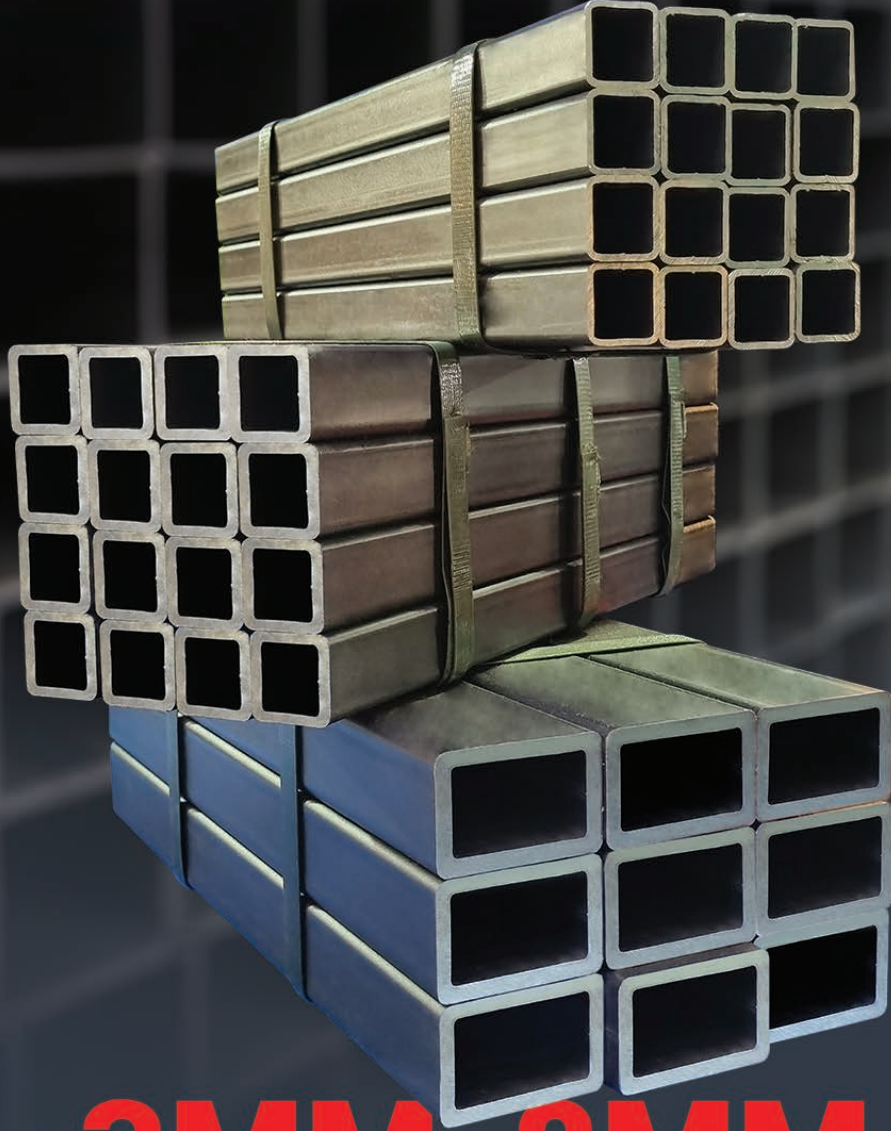


## Steel Profile Bundle Specifications – 3 mm Thickness

Profile Section (mm)	Thickness (mm)	Width (mm)	Height (mm)	Length (mm)	Weight (kg)	Bundle Arrangement	Profile Per Bundle	Bundle Gross Weight (kg)	Bundle Size (mm)
40x40x3 mm	3	40	40	6000	20.35	8x7	56	1/145	320x280
50x50x3 mm	3	50	50	6000	26	7x6	42	1/097	350x300
60x40x3 mm	3	40	60	6000	26	6x7	42	1/097	360x280
60x60x3 mm	3	60	60	6000	31.65	6x6	36	1/144	360x360
70x70x3 mm	3	70	70	6000	37.3	6x6	36	1/348	420x420
75x75x3 mm	3	75	75	6000	40.13	6x6	36	1/450	450x450
80x40x3 mm	3	40	80	6000	31.65	4x8	32	1/018	320x320
100x40x3 mm	3	40	100	6000	37.3	4x8	32	1/199	400x320
100x50x3 mm	3	50	100	6000	40.13	4x7	28	1/129	400x350



**3MM-8MM**





## STEEL PROFILE FEATURES THICKNESS: 3 TO 8 MM

- Structural and Construction Applications
- High compressive strength
- Ability to produce custom profiles with desired thickness, dimensions, and corner angles
- Lighter weight without reducing size or thickness, while maintaining high strength
- Uniform high-frequency welded seams with excellent durability
- Cost-effective due to reduced weight
- High-speed production with large manufacturing capacity

### Steel profile sizes in 3 to 8 mm thickness

80x80 mm	130x130 mm
90x90 mm	140x140 mm
100x100 mm	60x100 mm
120x120 mm	120x80 mm



## Hot-Rolled (Black) Steel Sheet

- Hot-rolled or black steel sheet is a type of steel sheet produced from hot-rolled slabs and features a smooth surface with a thickness of over 1 mm.

**Applications:** Manufacturing various steel profiles, liquid storage tanks, shipbuilding, automotive industry, and more...

## Cold-Rolled (Oiled) Steel Sheet

- Cold-rolled or oiled steel sheet is made from high-thickness hot-rolled sheets through cold rolling.

**Applications:** Metal strips, rods, and pipes; certain automotive parts (fenders, fuel tanks, axles, seats); profile ends and bodies; construction; household appliances; and general metal industries.

## Galvanized Steel Sheet

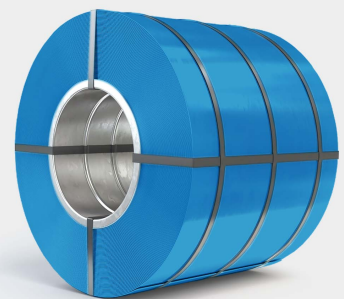
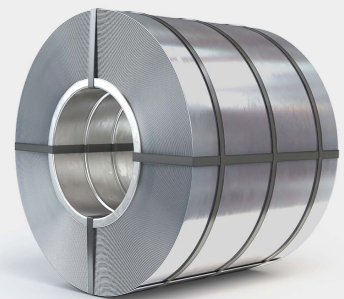
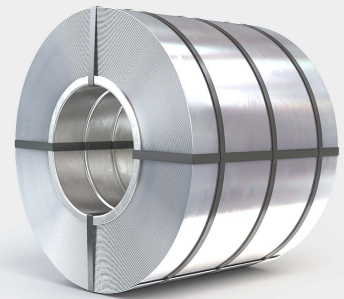
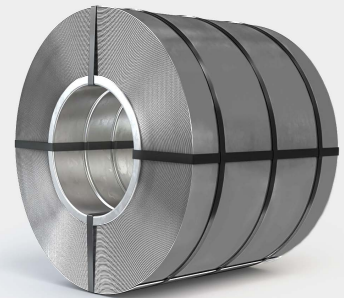
- Galvanized steel sheet is made from cold-rolled sheets coated entirely in molten zinc, which provides moisture resistance and prevents rust and corrosion.

**Applications:** Roofing, pergolas, car bodies, and household appliances.

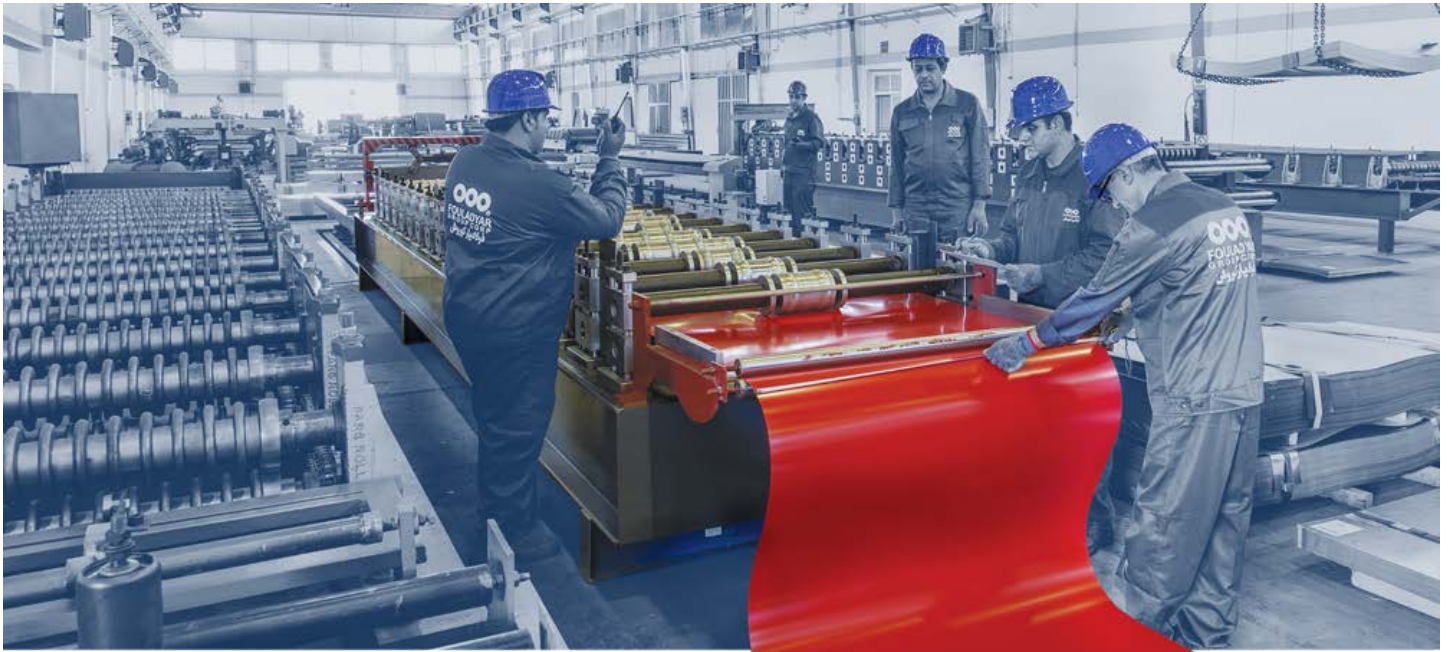
## Pre-Painted Galvanized Steel Sheet

- Pre-painted galvanized steel sheet is produced from galvanized steel. The front side is coated in two layers (15-20 microns) and the back side in one layer (7-15 microns) with baked enamel. This coating not only adds aesthetic appeal but also provides high resistance to rust, decay, and corrosion.

**Applications:** Roofing, pergolas, car bodies, and household appliances.







# TYPES OF FORMINGS BY KOUROSH STEEL GROUP



## Applications of Formed Steel Sheets

Suitable for roofing of buildings and warehouses

Ideal for house entrances and canopy covers

Perfect for gazebo and pergola construction

Suitable for walls of prefabricated containers (modular units)

Ideal for fencing and perimeter walls

Also suitable for insulation and protective coverings

## Advantages & Benefits of Formed Steel Sheets

Quick and easy installation

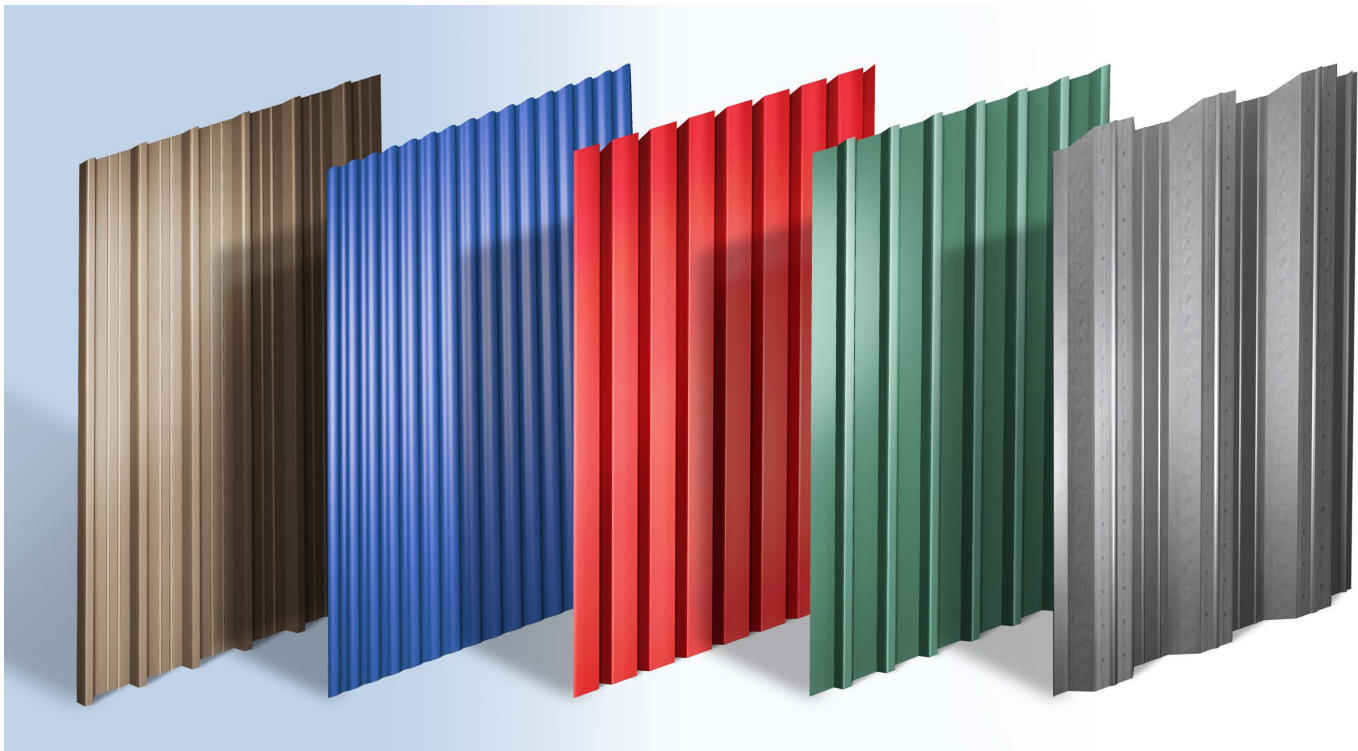
Aesthetic appeal with cost-effectiveness compared to similar products

Color and shape stability under weather conditions and against weeds

Lightweight with high safety in earthquake-prone areas

Resistance to moisture, water, and weathering

Durable and integrated structure, preventing cracks over time





## Steel Decking Forming

- This product, with its special grooves and bends, can be easily installed as a replacement for traditional roof systems. The grooves are filled with ready-mix concrete, providing unmatched speed of construction and building safety.

Steel decking can be manufactured on galvanized sheets with thicknesses ranging from 0.65 mm to 1.25 mm and a width of 1250 mm, according to customer requirements.

## Advantages and Benefits of 65 mm and 75 mm Steel Decks

- Easy installation with high quality and speed in ongoing construction projects
- Lighter weight compared to conventional joist-block or composite slabs
- Reduced foundation dimensions and reinforcement requirements
- Creates a uniform and integrated roof, reducing vibrations
- Enables simultaneous concrete pouring across the entire roof, reducing concrete volume
- Overall, using steel decking reduces construction time, material consumption, operating costs, and overall project expenses

## Difference Between 65 mm and 75 mm Steel Decks

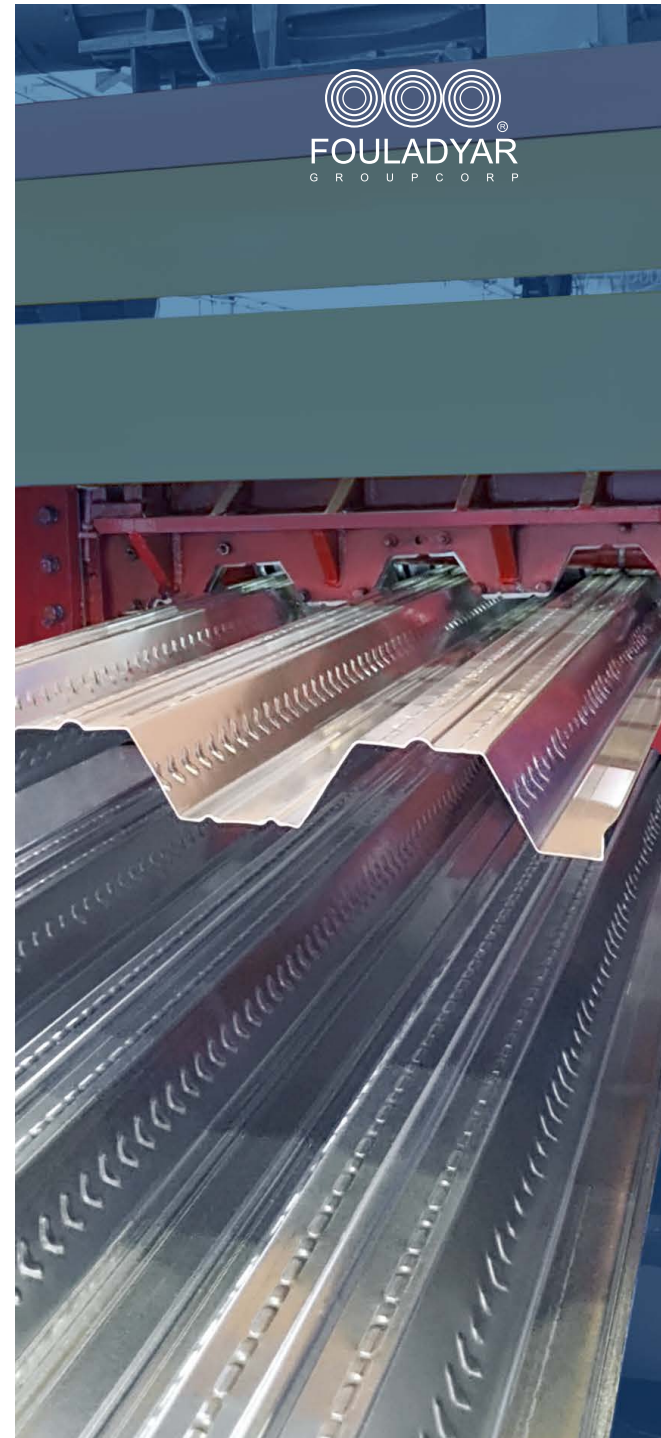
- 65 mm steel deck: Used for lightweight roofing, reducing concrete usage in floors that carry lower loads, such as staircases.

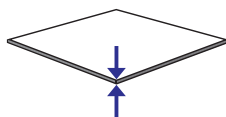
75 mm steel deck: Designed for main floors with higher load requirements, requiring more concrete and higher costs.

## Applications

- Main application is in building roofs, especially high-rise buildings, offering speed, safety, and high-quality execution.

Due to its uniform underside, it is also suitable for bridges and ceilings such as parking lots, where no false ceiling is required.

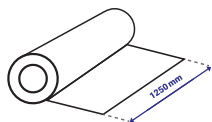




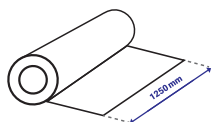
Performed on galvanized sheet with a thickness range of 0/65 to 1/25 mm

## STEEL DECK ROOF

### 65mm & 75mm Pitches

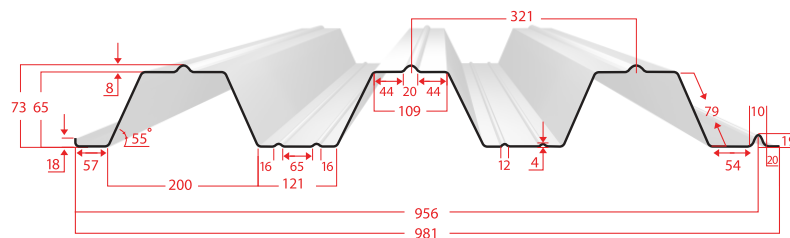


Linear Schematic of **1250 mm** Sheet Width

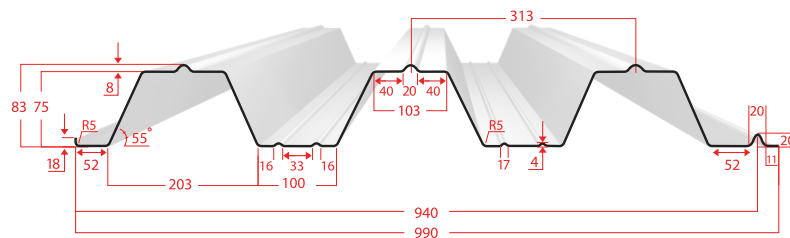


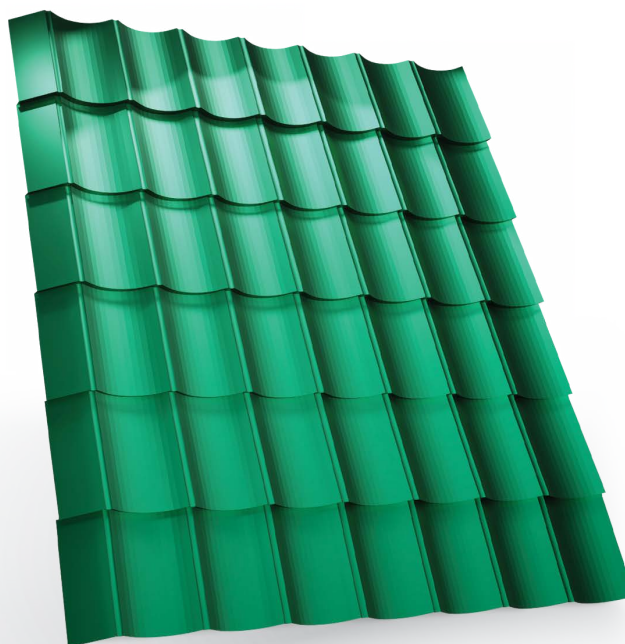
Linear Schematic of **1250 mm** Sheet Width

#### 65 MM STEEL DECK

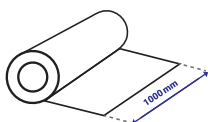


#### 75 MM STEEL DECK

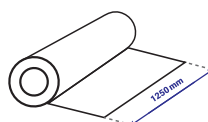




Performed on pre-painted sheet with a thickness range of 0/30 to 0/60 mm

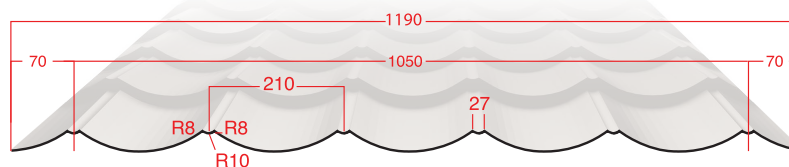
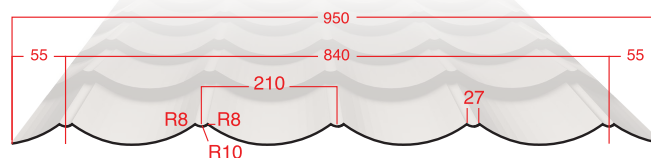


Linear Schematic of **1000** mm Sheet Width

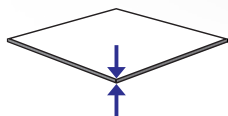


Linear Schematic of **1250** mm Sheet Width

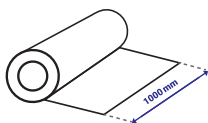
## SWEDISH STYLE ROLL FORMING TILE PALERMO STYLE



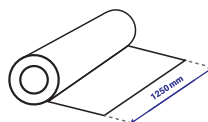




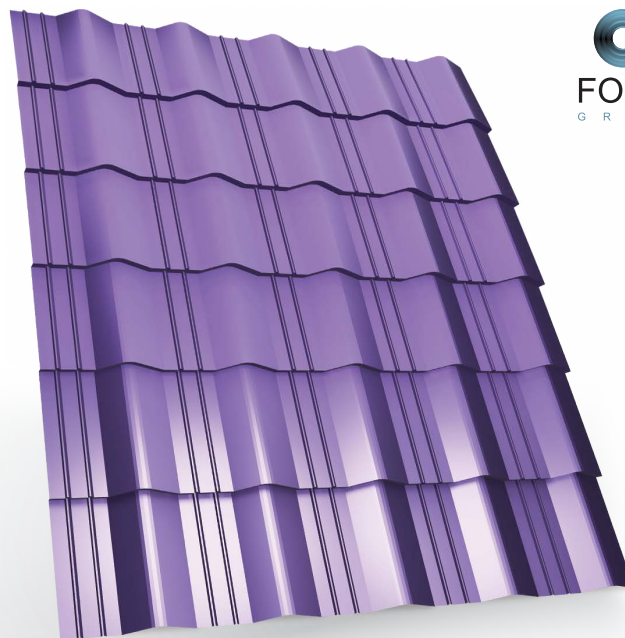
Performed on pre-painted sheet with a thickness range of 0/30 to 0/60 mm



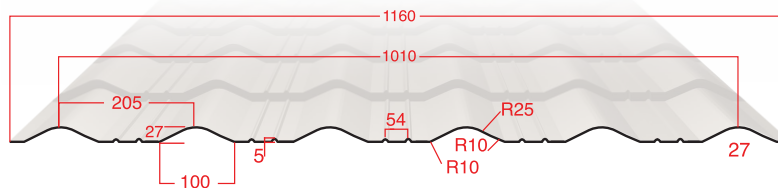
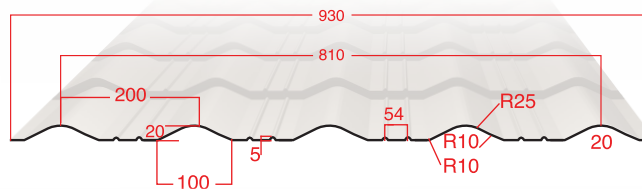
Linear Schematic of **1000** mm Sheet Width

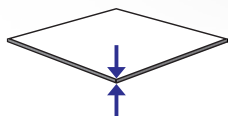


Linear Schematic of **1250** mm Sheet Width

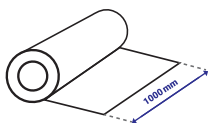


## ITALIAN STYLE ROLL FORMING TILE GENOVA STYLE WITH 2 LONGITUDINAL LINES

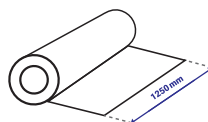




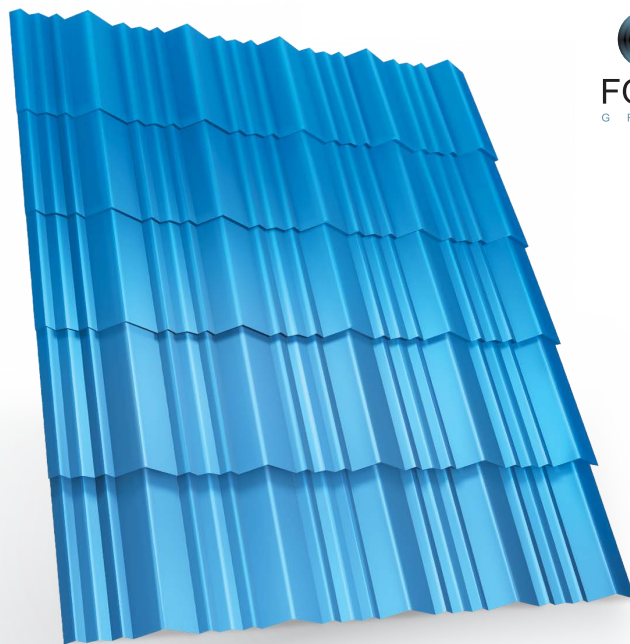
Performed on pre-painted sheet with a thickness range of 0/30 to 0/60 mm



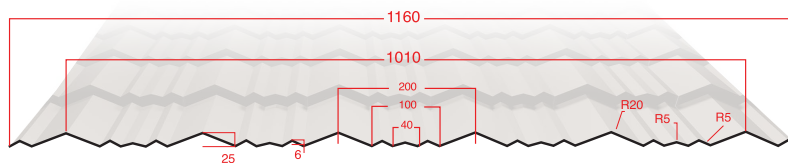
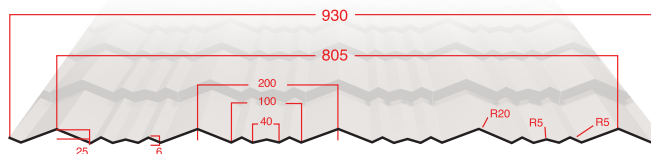
Linear Schematic of **1000** mm Sheet Width

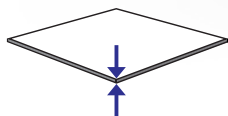


Linear Schematic of **1250** mm Sheet Width

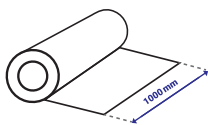


## FRENCH STYLE ROLL FORMING TILE GENOVA STYLE WITH 3 LONGITUDINAL LINES

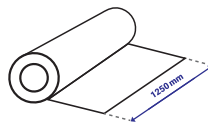




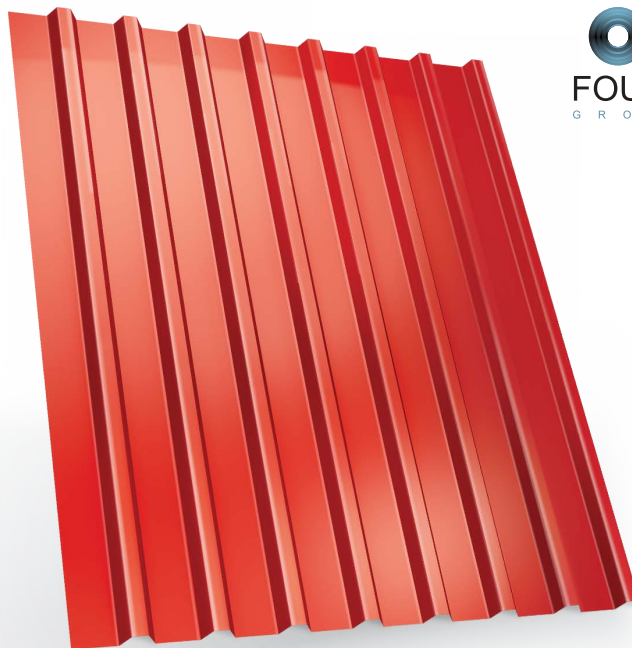
Performed on pre-painted sheet with a thickness range of 0/30 to 0/70 mm



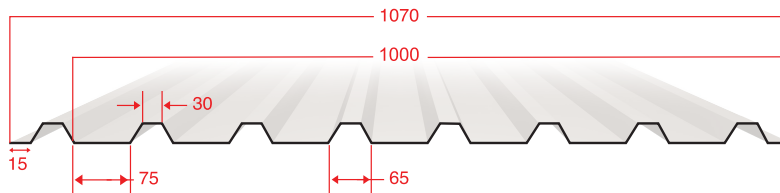
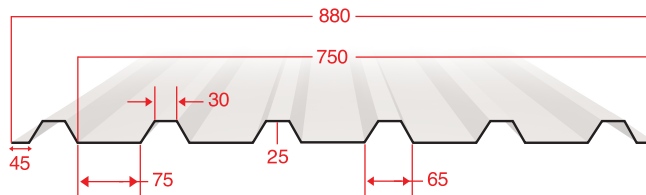
Linear Schematic of **1000** mm Sheet Width



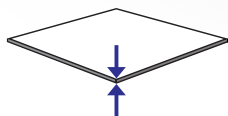
Linear Schematic of **1250** mm Sheet Width



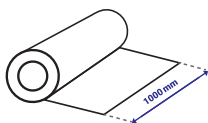
## TRAPEZOID ROLL FORMING



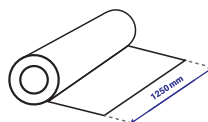




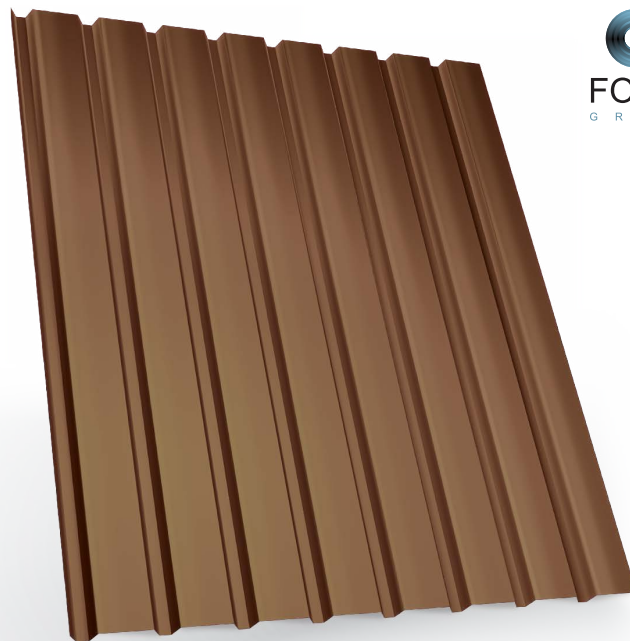
Performed on pre-painted sheet with a thickness range of 0/30 to 0/70 mm



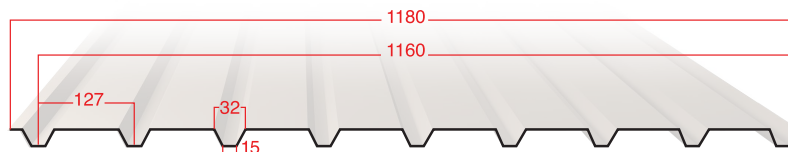
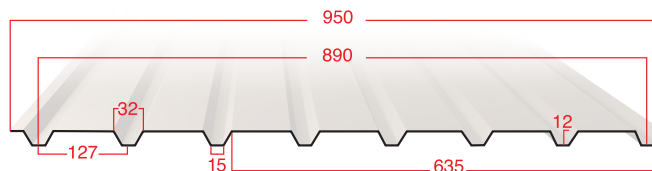
Linear Schematic of **1000** mm Sheet Width

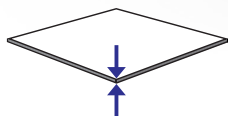


Linear Schematic of **1250** mm Sheet Width

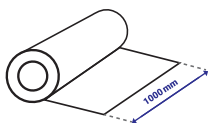


## DUMPA ROLL FORMING

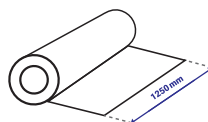




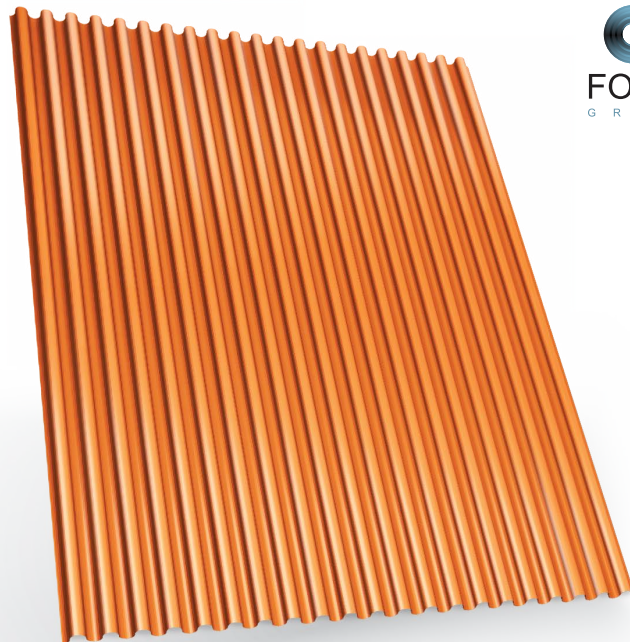
Performed on pre-painted sheet with a thickness range of 0/16 to 0/50 mm



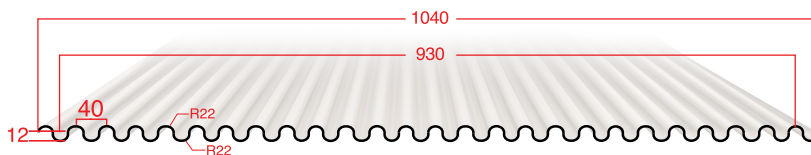
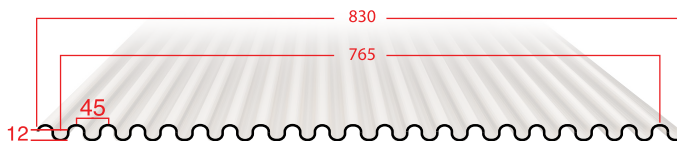
Linear Schematic of **1000** mm Sheet Width



Linear Schematic of **1250** mm Sheet Width

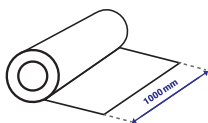


## SMALL CORRUGATED ROLL FORMING

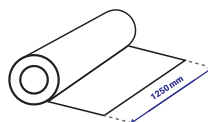




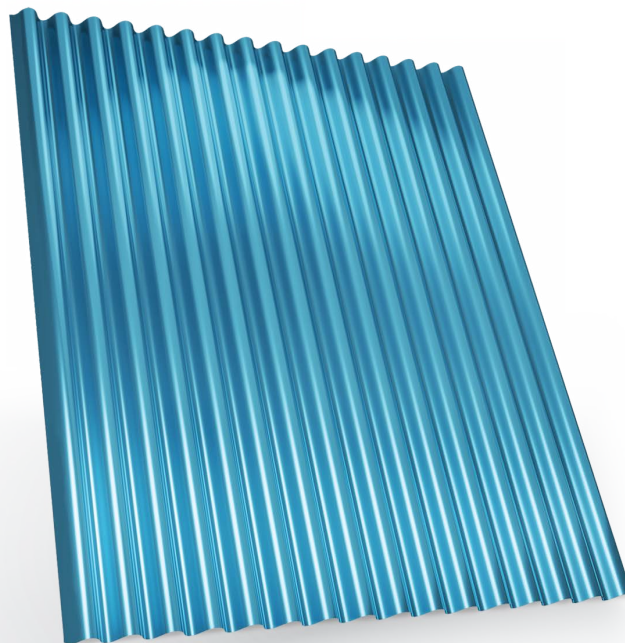
Performed on pre-painted sheet with a thickness range of 0/20 to 0/50 mm



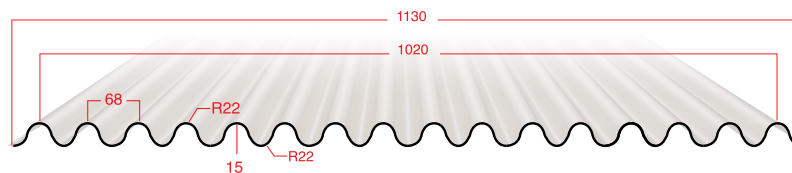
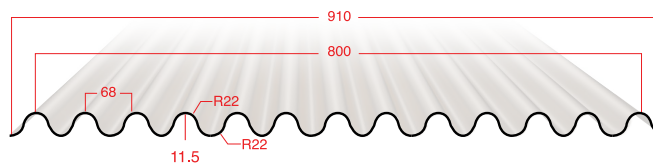
Linear Schematic of **1000** mm Sheet Width

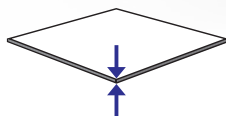


Linear Schematic of **1250** mm Sheet Width

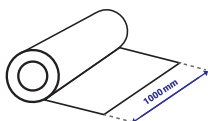


## NORMAL CORRUGATED TYPE A ROLL FORMING

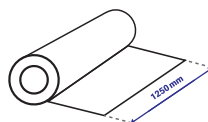




Performed on pre-painted sheet with a thickness range of 0/20 to 0/80 mm



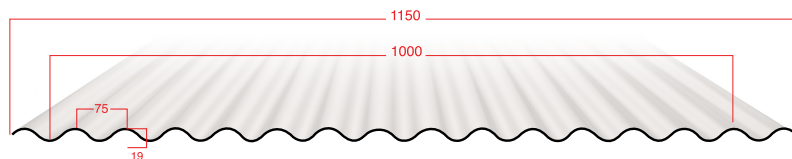
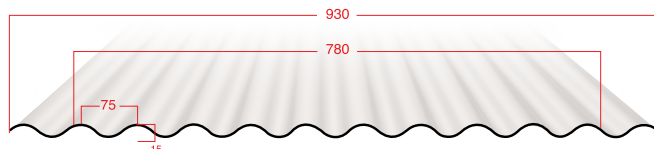
Linear Schematic of **1000** mm Sheet Width



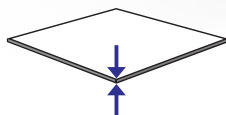
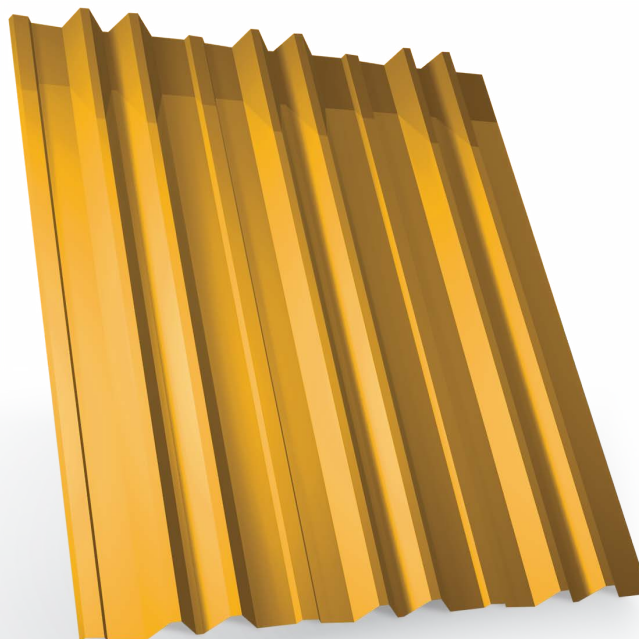
Linear Schematic of **1250** mm Sheet Width



## NORMAL CORRUGATED TYPE B ROLL FORMING

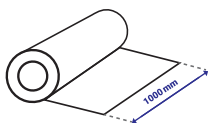




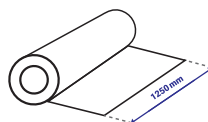


Performed on pre-painted sheet with a thickness range of 0/30 to 0/60 mm

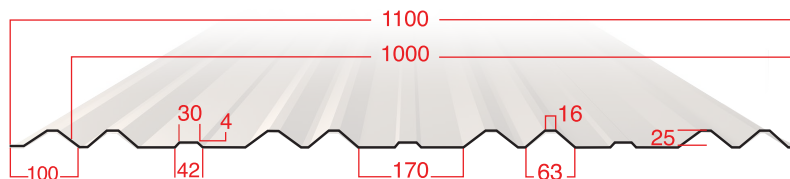
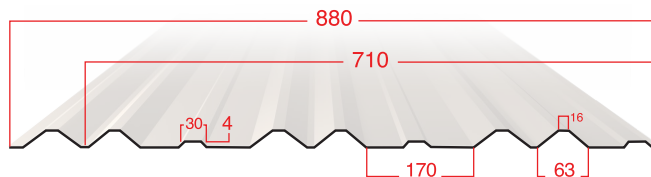
## TRADITIONAL SHADOWLINE ROLL FORMING

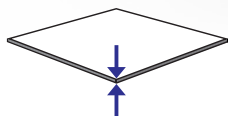


Linear Schematic of **1000** mm Sheet Width

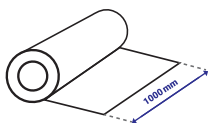


Linear Schematic of **1250** mm Sheet Width

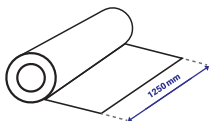




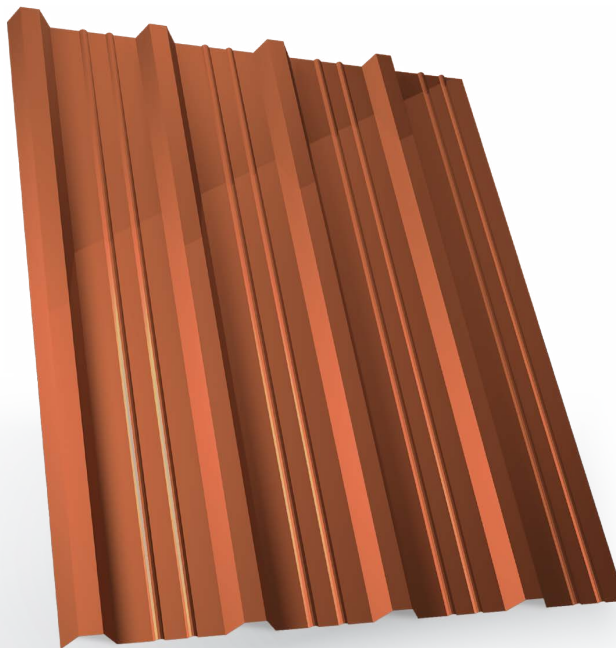
Performed on pre-painted sheet with a thickness range of 0/30 to 0/50 mm



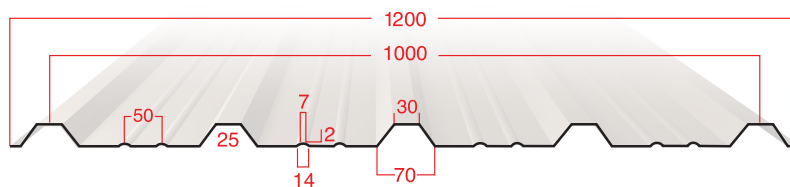
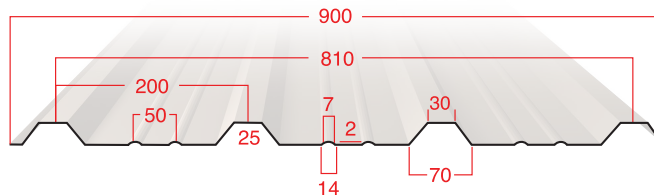
Linear Schematic of **1000** mm Sheet Width



Linear Schematic of **1250** mm Sheet Width



## NEW DESIGN SHADOWLINE ROLL FORMING

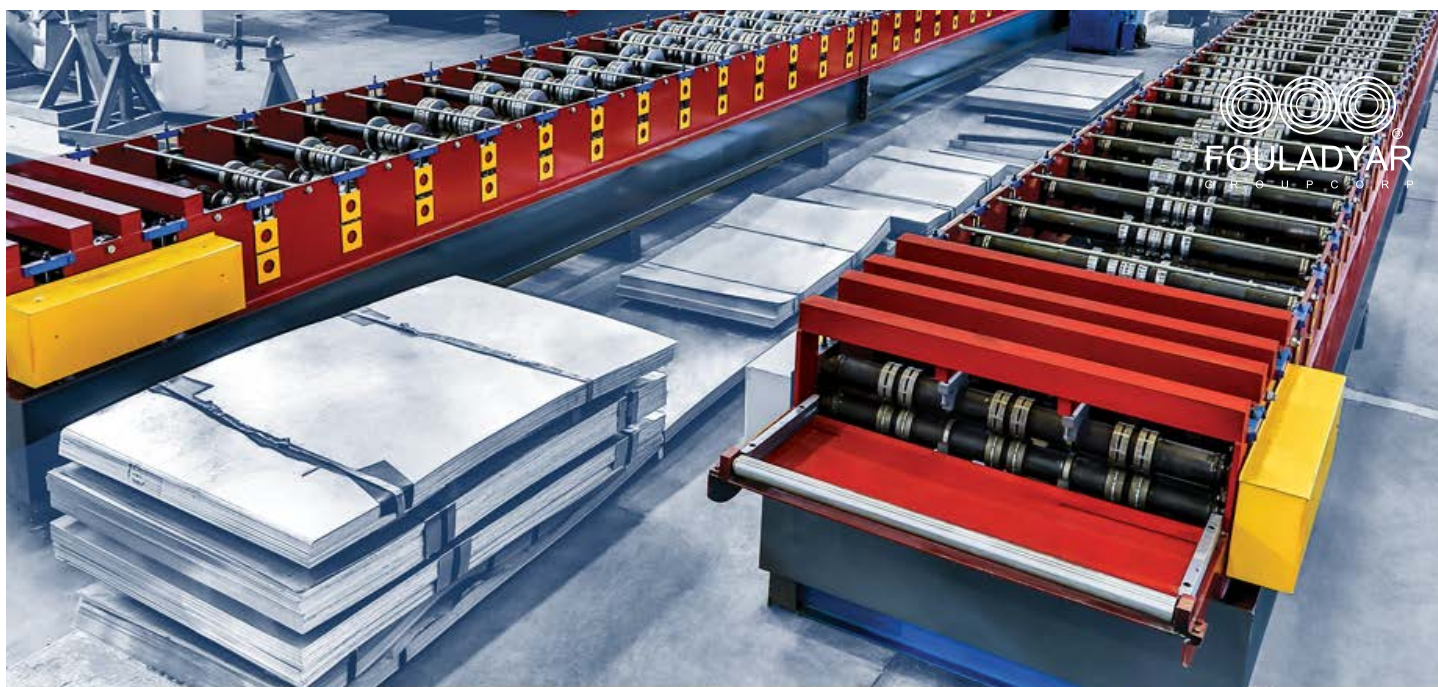




FOULADYAR®  
GROUP CORP









## SLIT IN TO THE WIDTHS

These services are provided on cold-rolled, galvanized, and pre-painted sheets, according to customer requests.

The machine is capable of cutting steel sheets with thicknesses ranging from 0.18 mm to 2.5 mm, with a minimum coil width of 28 mm. Each roll can be slit into a minimum of 1 and a maximum of 42 cuts.

The machine ensures extremely smooth, burr-free cuts and produces tightly wound, uniform coils, which is crucial for subsequent production processes.

### Applications

Roll lightening

Duct doors

Cable trays

Angle irons

Reinforcement meshes (metal lath)

Strips and other metal components



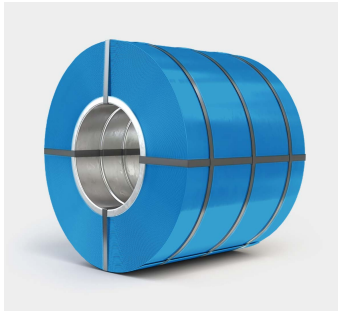
## SLIT IN TO THE LENGTHS

These services are provided upon customer request on cold-rolled, galvanized, and pre-painted sheets.

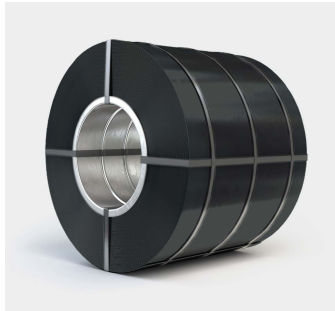
The machine is capable of cutting steel sheets with thicknesses ranging from 0.14 mm to 8 mm, with a minimum order length of 40 cm.



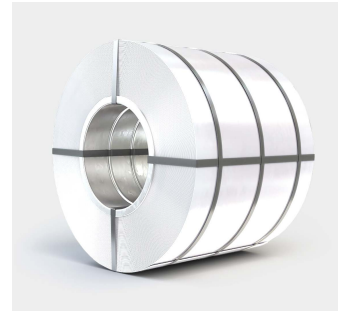
# AVAILABLE PRE-PAINTED GALVANIZED STEEL COILS FOULADYAR GROUP



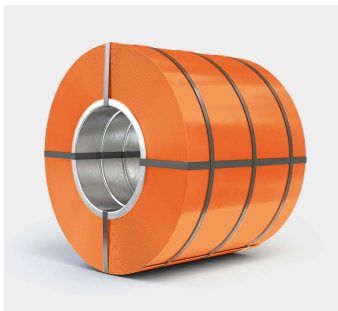
Code: 5015



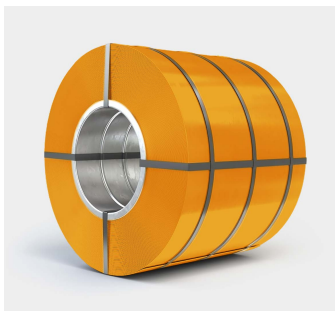
Code: 9005



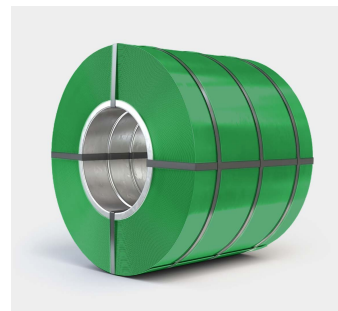
Code: 9016



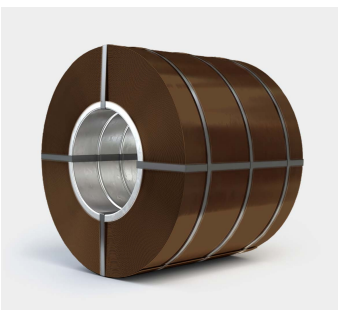
Code: 2004



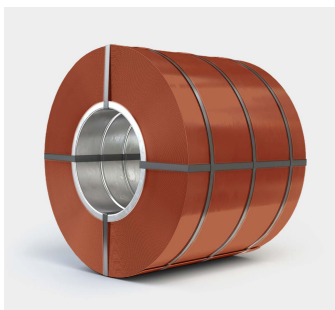
Code: 1028



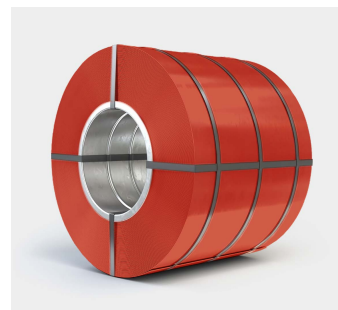
Code: 6024



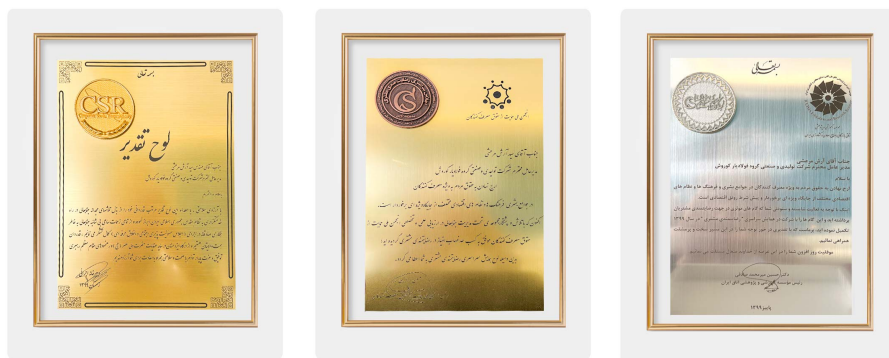
Code: 8017



Code: 8004



Code: 3000



## FOULADRAR GROUP

Recognized as an Outstanding Unit by the Consumer Rights Protection and Customer Satisfaction Association from 2018 to 2025

Recipient of the Certificate and Trophy for Social Responsibility and Professional Ethics in 2020

Recognized as an Outstanding Industrial Unit by the House of Industry, Mine, and Trade from 2019 to 2025

Ranked 204th among Iran's top 500 companies based on sales in 2023

Achieved 4th place in the Machinery, Equipment, and Metal Industries Group in 2022

Recipient of the Top Brand Certificate and Trophy in 2024





# FOULADYAR

G R O U P C O R P



[www.fouladyargroup.com](http://www.fouladyargroup.com)



[Telegram.me/fouladyar](https://t.me/fouladyar)



[fouladyar.group](https://www.instagram.com/fouladyar.group)

## 021-72125

SALES OFFICE